



Ecochopper

Herder.nl

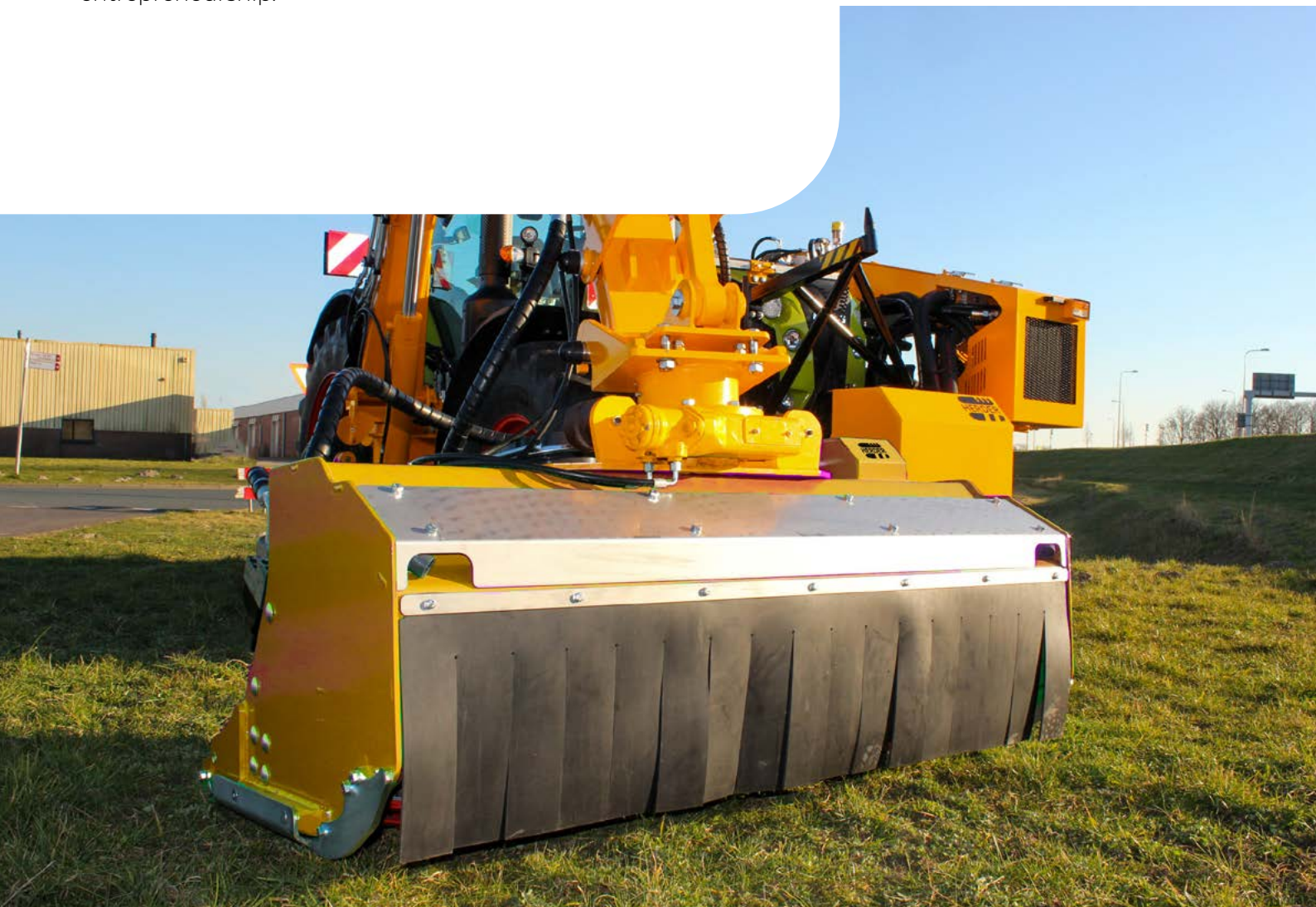
Innovative disc mower

The Herder Ecochopper is an innovative mower with a built-in shredding unit based on the principle of a disc mower. The mower has no suction effect, and therefore the seeds remain on the ground. This increases biodiversity along road verges. The absence of air drafts, the protection of fauna, and the adapted track roller ensure that fauna and flora remain intact.

The grass clippings are reduced to just a few centimetres through the built-in shredding unit and can be collected immediately in one working passage using a suction unit.

In addition, adequately mown grass on the verge can be re-used. Besides compost, properly cut grass can also be used to produce biogas, hydrogen and even paper or furniture.

The Ecochopper therefore contributes to sustainable entrepreneurship.



Sustainable verge management

Making roadside maintenance more sustainable is becoming increasingly topical. Good flora and fauna management creates more biodiversity in the verges. By using the Ecochopper, insects have a better chance of survival, and seeds remain on the ground. This is good for biodiversity and thus for a healthy ecosystem.

Roadsides and green spaces are an essential part of nature reserves. They form a connection for animals and plants between different habitats. To keep these verges as attractive as possible, you must maintain them correctly and with suitable materials.



The Herder Ecochopper has a number of unique innovations:

- **Disc mowers** do not suck up the soil. Seeds, insects and small mammals remain on the ground. This creates more variety in the ecosystem.
- **Fauna protection** on the underside of the mower provides extra protection for small soil life.
- **Adapted track roller** ensures minimum soil contact. This minimises the impact on the soil.
- **An air curtain** on the front of the mower provides an extra airflow (can be scented if required). This airflow blows flying insects such as butterflies and bees away from the mower.
- **The mowing curtain** at the front serves as extra protection for insects and animals.



The Ecochopper's modified track roller has an elevation of approximately 3 cm in the middle of the roller. This means that the roller has a minimal rolling effect on the ground. Small animals and insects will therefore have a higher chance of survival.

The scraper on the roller ensures that it stays clean for perfect ground adaptation.



Track roller for ground tracking



Fauna protection

Fauna protection at the mower discs ensures that small mammals, amphibians and insects living on the ground do not get into the mower. Many insects want to jump away when threatened and end up in the discs. The protection plate prevents them from getting into the mower.

A scented mower curtain as extra protection against flying insects. An additional air outlet at the front of the mower blows insects away from the mower. This can be fitted with an extra scent to 'warn' insects from a distance.



(Scented) curtain to chase away insects

Optimum yield from the grass clippings

Disposing of mown verge grass costs municipalities a lot of money every year. Yet the potential of adequately mowed verge grass is enormous. Besides compost, properly cut grass can also be used to produce biogas, hydrogen and even paper or furniture. The mown grass mustn't contain any contamination such as litter, soil and/or sand particles. In addition, the grass particles must be reduced to just a few centimetres.

The Ecochopper has no suction effect during mowing, as with flail mowers. The adapted ground adaption roller avoids uneven ground and provides minimal ground contact. As a result, sand and soil are not sucked into the mower, and litter stays on the ground. The grass cuttings are therefore very clean.

By means of the built-in shredding unit, grass clippings are reduced to just a few centimetres and can be collected immediately in one operation by means of a suction unit. By shredding grass in the right way, the grass cuttings are suitable for compost processing or generating biogas or hydrogen. The purity of the grass is an essential factor in the yields, especially when processing grass clippings into biogas. Sand and soil cause wear and tear in fermentation installations. The cleaner and smaller the grass clippings, the higher the potential yield.

Therefore, the Ecochopper is ideally suited to maximising the yield from the grass clippings.

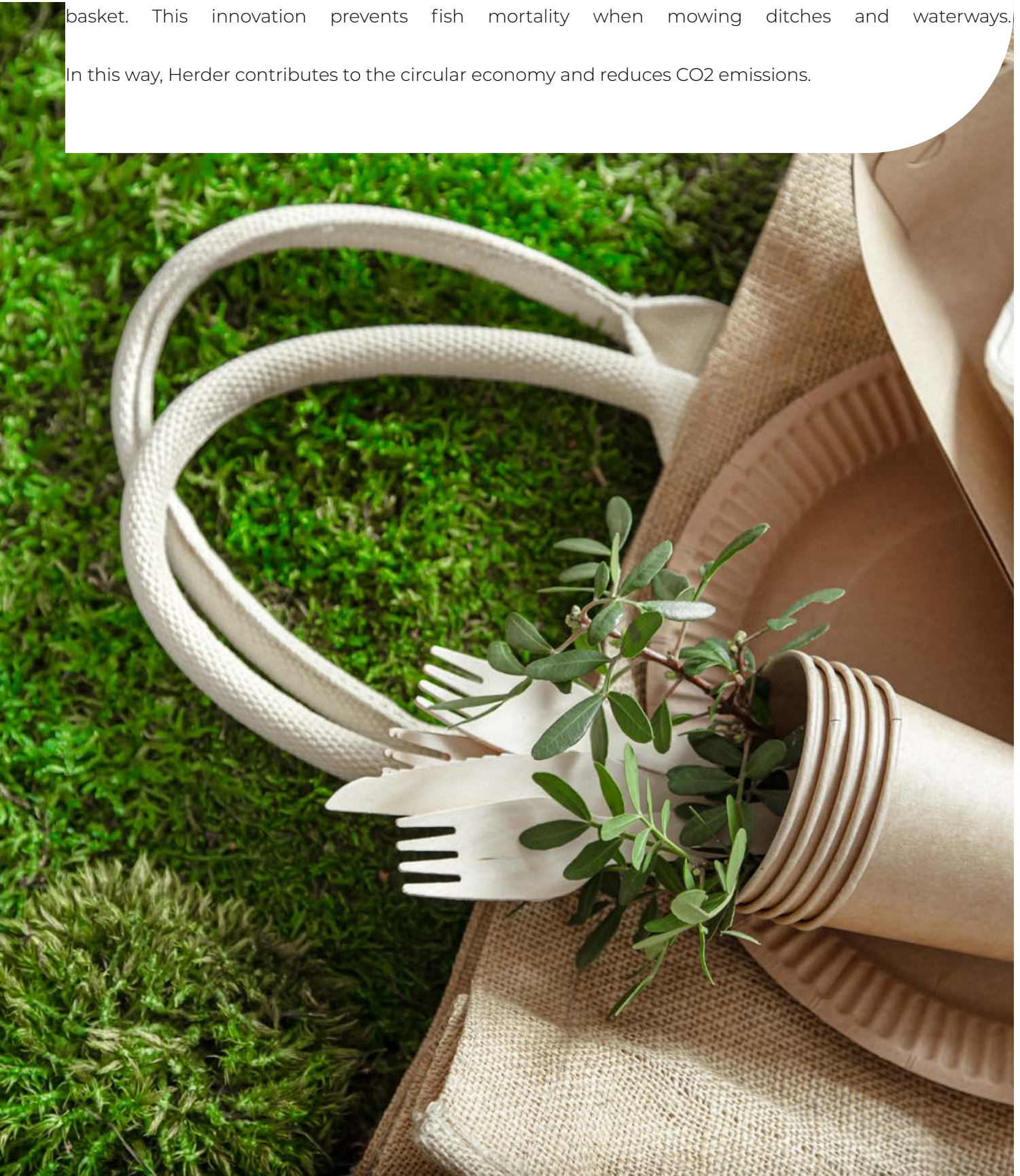


Circulair economy

The potential of well-mown verge grass is enormous. In addition, the need to recycle and contribute to a circular economy is increasing, partly due to a scarcity of raw materials.

The Ecochopper is the next product in sustainable solutions for ditch and verge management. Herder previously introduced the Fishprotector for use with the Herder mowing basket. This innovation prevents fish mortality when mowing ditches and waterways.

In this way, Herder contributes to the circular economy and reduces CO2 emissions.



Specifications



ECC 125

ECC 165.B

Dimensions (LxBxH)	138 x 109 x 62 cm	1178 x 109 x 79 cm
Weight	450 kg	660 kg
Drive	Hydraulic via mowing arm	Hydraulic via mowing arm
Maximum hydraulic pressure	Max. 350 bar	Max. 350 bar
Power requirements	70 Kw; l/m;	70 Kw; l/m;
Options	Scented insect curtain, Swivel head	Scented insect curtain, Swivel head

Herder

Herculesweg 6, 4338 PL

Middelburg (NL)

T: +31 118 679500

E: info@herder.nl

www.herder.nl

